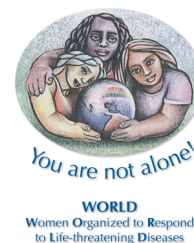


REPORT CARD

A GENDER MONITORING TOOL FOR THE U.S. NATIONAL HIV/AIDS STRATEGY

JUNE 2010



**A GENDER MONITORING TOOL REPORT CARD FOR THE
U.S. NATIONAL HIV/AIDS STRATEGY**

This document is a gender monitoring tool report card and represents the next step by the community of women living with HIV in the United States and their allies in assuring the development and implementation of a meaningful and effective National HIV/AIDS Strategy (NHAS). The purpose of the tool is to analyze the extent to which the NHAS identifies and prioritizes ways to improve all women’s, including transgender women’s, access to HIV prevention, care, and treatment programs consistent with the right to nondiscrimination, dignity, bodily integrity, and ethical treatment.

Gender monitoring tools are commonly used globally to assess the extent to which the rights of women and transgender people are upheld in policy making and implementation and how gender is considered in the design, development, and implementation of laws, policies, and regulations. The community of women living with HIV and advocates in the U.S. will be able to use this gender monitoring tool to quickly assess policy strengths and gaps, and to identify the clearest path to effective advocacy. The tool will also allow policy makers to immediately see, and rectify legal, policy, and regulatory gaps that impact women living with and affected by HIV.

Upon the release of the NHAS, a group of national HIV/AIDS organizations that advocate for the human rights of women living with and affected by HIV will use this tool to assess how and to what extent the three goals of the NHAS, when formally articulated in the final Strategy, adequately addresses the needs of women. The three NHAS goals are 1) reduce HIV incidence; 2) increase access to care and optimizing health outcomes; and 3) reduce HIV-related health disparities.

This initial assessment will be followed by ongoing gender monitoring of the implementation of the NHAS on a state and national level. The tool may also be adapted and utilized on a national, local, and municipal level to ensure the needs of HIV-positive and affected women are identified and addressed in all policies that impact their lives both locally and nationally.

The monitoring tool identifies a discrete set of key areas where HIV-positive and affected women’s rights are most clearly implicated.

GRADING

A	Identified the issue as affecting women, and proposed next steps reflecting an articulated gender analysis.
B	Identified the issue as affecting women, and proposed next steps but without an articulated gender analysis.
C	Identified the issue generally but next steps reflect limited to no gender analysis.
D	Identified the issue with no next steps, or gender analysis.
F	Failed to identify the issue entirely.

REPORT CARD	
GRADE	KEY AREAS OF CONCERN FOR WOMEN LIVING WITH HIV
	Law and Policy Review
	<ul style="list-style-type: none"> Does the National HIV/AIDS Strategy identify discriminatory and/or medically inaccurate state and federal laws and policies as harmful?
	<ul style="list-style-type: none"> Does the National HIV/AIDS Strategy prioritize the vigorous implementation of current nondiscrimination laws?
	<ul style="list-style-type: none"> Does the National HIV/AIDS Strategy consider where women, including transgender women, may be victim to multiple forms of discrimination due to HIV status, gender, gender expression, sexual orientation and/or race?
	Data Collection & Risk Assessment
	<ul style="list-style-type: none"> Does the National HIV/AIDS Strategy prioritize accurate and ethical data collection and risk assessment that takes into account unique aspects of the HIV epidemic among women, including transgender women?
	<ul style="list-style-type: none"> Does the National HIV/AIDS Strategy recommend disaggregated data collection by sex, race/ethnicity, gender identity, and gender expression?
	Meaningful Involvement of HIV-positive Women
	<ul style="list-style-type: none"> Does the National HIV/AIDS Strategy identify mechanisms to ensure meaningful involvement of women living with HIV, with an emphasis on disproportionately impacted populations, in national and local decision making bodies?
	Women Centered Service Delivery
	<ul style="list-style-type: none"> Does the National HIV/AIDS Strategy take steps toward the integration of sexual and reproductive health services with HIV services?
	<ul style="list-style-type: none"> Does the National HIV/AIDS Strategy call for expanding availability of female-controlled prevention mechanisms, including the new female condom?
	<ul style="list-style-type: none"> Does the National HIV/AIDS Strategy prioritize peer based programs and provider competency training to assure non-judgmental care for HIV-positive women and women vulnerable to acquiring HIV?
	<ul style="list-style-type: none"> Does the National HIV/AIDS Strategy recommend that client-centered counseling on treatment options be a priority?
	Resource Equity
	<ul style="list-style-type: none"> Does the National HIV/AIDS Strategy call for equity and parity in funding resources that address women's needs, including transgender women, and areas where women make up a greater share of the epidemic than the national average?
	Research
	<ul style="list-style-type: none"> Does the National HIV/AIDS Strategy call for women-centered biomedical research strategies to address HIV acquisition by women, including transgender women?
	<ul style="list-style-type: none"> Does the National HIV/AIDS Strategy call for research that can be used to address structural drivers of the HIV epidemic?
	FINAL GRADE